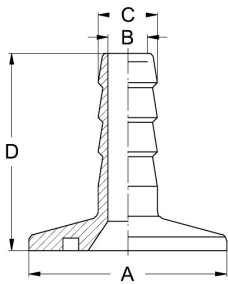


KF Kleinflansche DIN 28403 + ISO 2861, Edelstahl, Aluminium Art.Nr. EUR Art.Nr. EUR

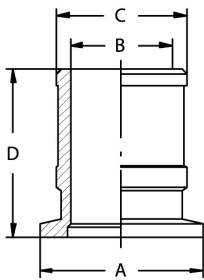
KF Schlauchwelle

DN	A	B	C	D			AISI304	
10	30	4	7	40			134901	21,80
10/16	30	8	12	40			130410	21,80
20/25	40	8	12	40			130411	26,00
32/40	55	8	12	40			130412	32,90
50	75	8	12	40			130407	42,10



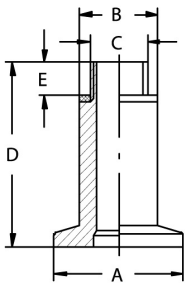
KF Schlauchstutzen

DN	A	B	C	D			AISI304	
16	30	16	21,5	40			135802	31,70
25	40	25	31,5	40			135804	36,80
40	55	37,5	41,5	40			135806	46,70
50	75	47,5	51,5	40			135807	62,30



KF Gewindeflansch

DN	A	B	C	D	E			AISI304-FKM	
10	30	18	G 1/4"	41	8			136101	38,80



KF Einschraubflansch

DN	A	B	C	D	E			AISI304-FKM	
10	30	G 3/8"	10,5	35	SW 19			136301	64,10
16	30	G 1/8"	5,5	26	SW 13			136202	64,10
16	30	G 1/2"	11	35	SW 22			136302	64,10
25	40	G 3/4"	21	45	SW 30			136504	84,30
25	40	G 1"	20,5	45	SW 32			136304	84,30

